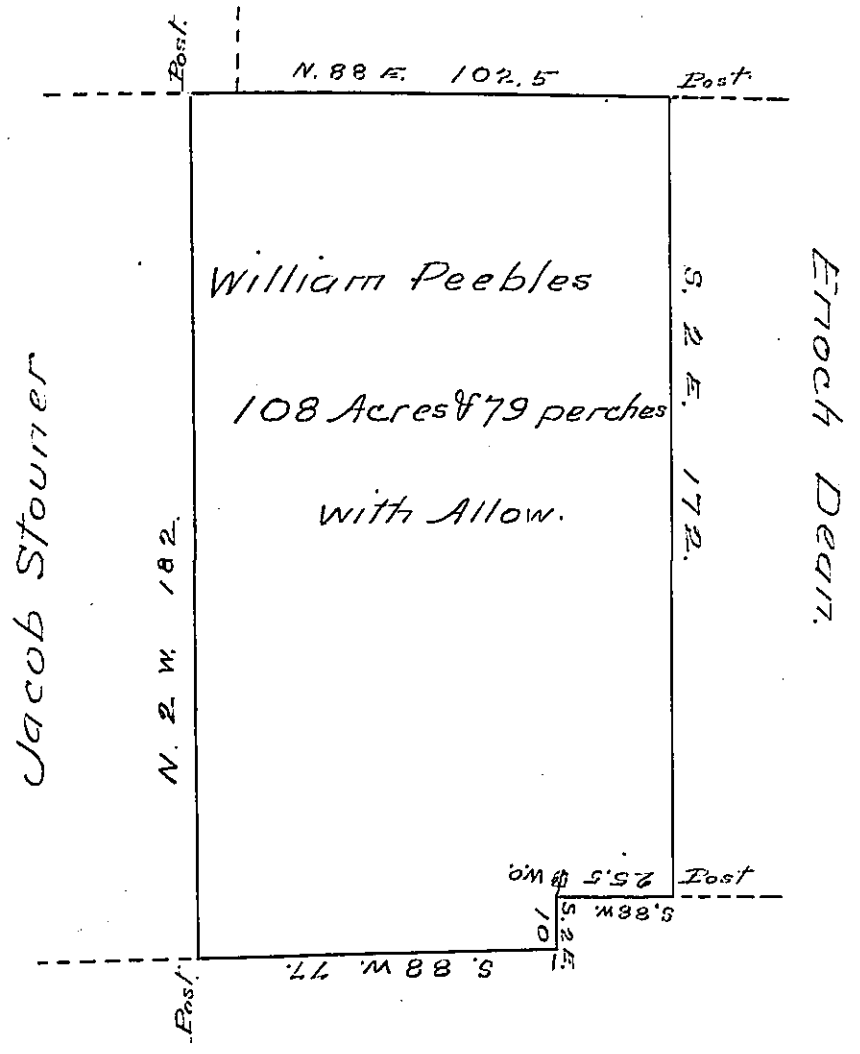


Robert Wallace. Henry Emery.



Donation Land in 1st Dist.

Situate in Sliperyrock Township Mercer County Penns^a. on the waters of Sliperyrock creek Containing one hundred & eight Acres and Seventy nine perches - with Allowance of six per cent for Roads &c. Surveyed Dec^r. 10th 1839 for William Peebles in pursuance of his Actual Settlement and Residence thereon.

by me John Findley D.S.

Jacob Sallade Esq^r
Surveyor General.

IN TESTIMONY that the above is a copy of the original remaining on file in the Department of Internal Affairs of Pennsylvania, made conformably to an Act of Assembly approved the 16th day of February, 1833, I have hereunto set my Hand and caused the Seal of said Department to be affixed at Harrisburg, this seventeenth day of May 1906.

Isaac D. Brown
Secretary of Internal Affairs.